

## Technical Information / Technische Informationen

### Eis-Tower Naked EB 160 / EB 280 /SL B 160

#### Content:

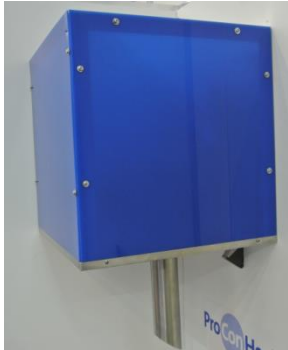
- Technical Data Sheets Eis-Tower Naked EB 160 / EB 280
- Position of discharging pipe
- Ceiling mounting
- Technical Data Sheet Eis-Tower Naked SL B 160
- Installation Eis-Tower Naked EB – Illustration of connections

#### In addition:

- Separate technical information One-Way-Level Sensor SA1U\_BO2MT

## Technical Data Sheet

### Eis-Tower Naked EB 160



Design Example

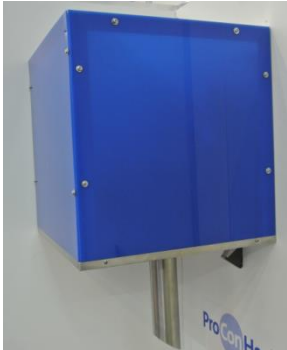


#### Technical Data:

Ø Output of flake ice	about 160 kg / 24 h, equates an output of flake ice of about 320 l / 24 h (depending on water and air temperature)		
	<i>Please notice: In area of sauna performance could be up to 20% less due to the special room climate!</i>		
Deviation for external sizes	560 mm wide, 569 mm depth, 600 mm high		
Weight	63 kg + discharging pipe		
Voltage	220-240V/50HZ (60 HZ optional)		
Power Input	650 Watt		
Fuse	10 A		
Refrigerant	R404A		
<b>Minimum - Maximum</b>	Water	Minimum	3°C
		Maximum	32°C
	Air	Minimum	10°C
		Maximum	43°C
Voltage	Minimum	-10%	
	Maximum	+10%	
Water pressure	Minimum	1 Bar	
	Maximum	6 Bar	
Water consumption ca.	5,5l/kg water cooled, 1l/kg air cooled depends on air temperature		
Water connection	¾"		
Design	water cooled, if required air cooled		
Discharging pipe	Stainless steel, length depending on specification		

## Technical Data Sheet

### Eis-Tower Naked EB 280



Design Example

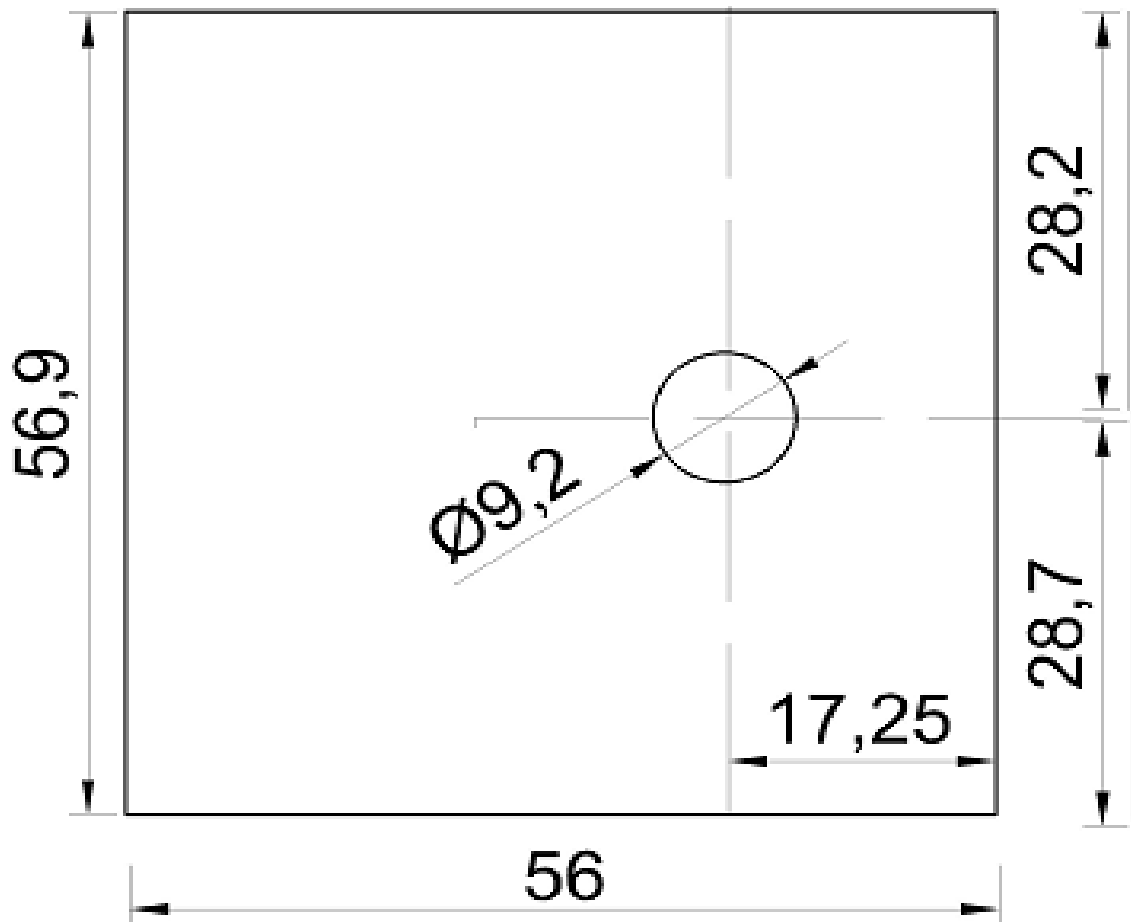


#### Technical Data:

∅ Output of flake ice	about 280 kg / 24 h, equates an output of flake ice of about 560 l / 24 h (depending on water and air temperature)		
	<i>Please notice: In area of sauna performance could be up to 20% less due to the special room climate!</i>		
Deviation for external sizes	560 mm wide, 569 mm depth, 695 mm high		
Weight	83 kg + discharging pipe		
Voltage	220-240V/50HZ (60 HZ optional)		
Power Input	1050 Watt		
Fuse	10 A		
Refrigerant	R404A		
<b>Minimum - Maximum</b>	Water	Minimum	3°C
		Maximum	32°C
	Air	Minimum	10°C
		Maximum	43°C
Voltage	Minimum	-10%	
	Maximum	+10%	
Water pressure	Minimum	1 Bar	
	Maximum	6 Bar	
Water consumption ca.	5,2l/kg water cooled, 1l/kg air cooled depends on air temperature		
Water connection	3/4"		
Design	water cooled, if required air cooled		
Discharging pipe	Stainless steel, length depending on specification		

## Eis-Tower Naked EB 160 /EB 280

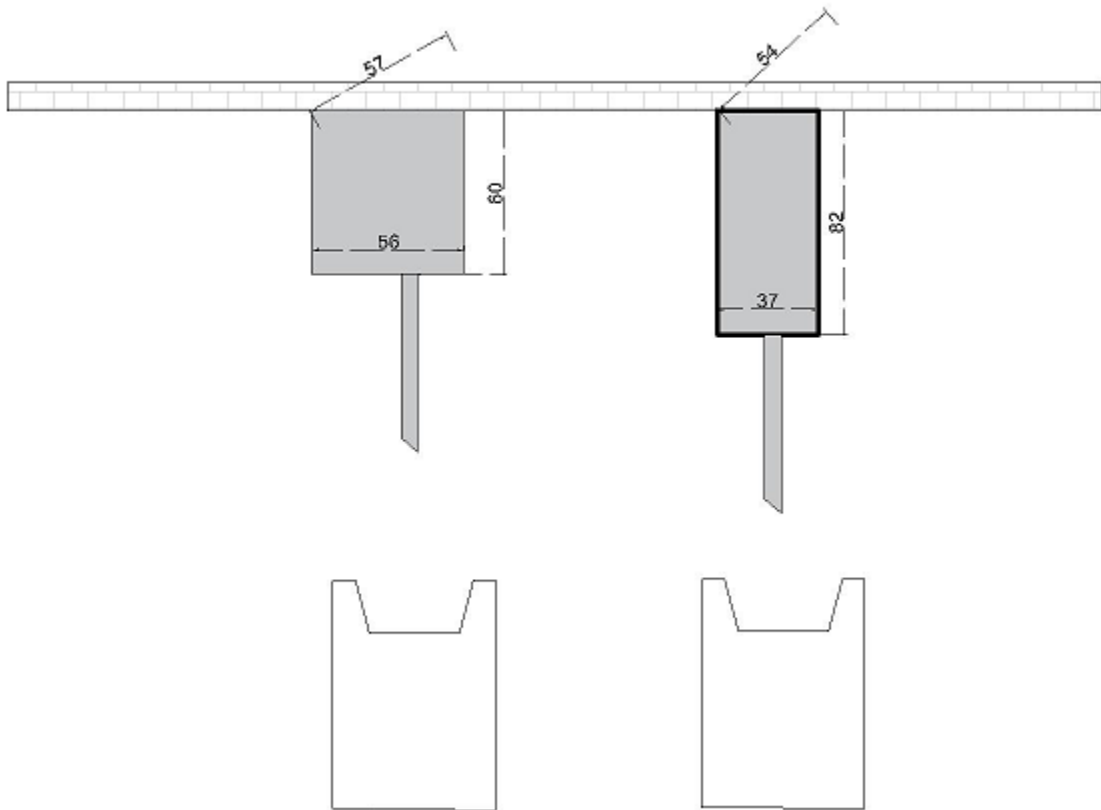
### Position of breakthrough of discharging pipe



Eis-Tower Front

Dimension unit: cm

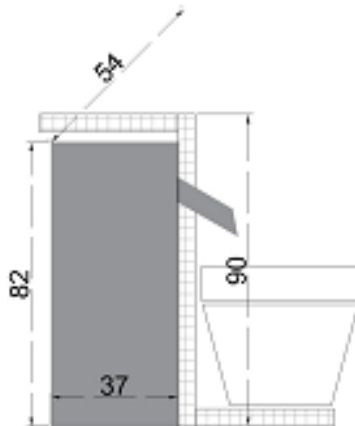
## Examples for ceiling mounting:



Eis-Tower Naked EB 160  
( EB 280 optional)

Eis-Tower Naked SL B 160  
(SL B 280 optional)

- Eis-Tower Naked EB and Eis-Tower Naked SL B can be mounted directly on the wall/ceiling with the internal frame.



Design Example

## Technical Data Sheet

### Eis-Tower Naked SL B 160

#### Technical Data:

∅ Output of flake ice	about 160 kg / 24 h, equates an output of flake ice of about 320 l / 24 h (depending on water and air temperature)		
	<i>Please notice: In area of sauna performance could be up to 20% less due to the special room climate!</i>		
Deviation for external sizes	370 mm wide, 540 mm depth, 820 mm high		
Weight	about 65 kg + discharging pipe		
Voltage	220-240V/50HZ (60 HZ optional)		
Power Input	650 Watt		
Fuse	10 A		
Refrigerant	R404A		
Minimum - Maximum	Water	Minimum	3°C
		Maximum	32°C
	Air	Minimum	10°C
		Maximum	43°C
	Voltage	Minimum	-10%
		Maximum	+10%
	Water pressure	Minimum	1 Bar
		Maximum	6 Bar
Water consumption ca.	5,5l/kg water cooled, 1l/kg air cooled depends on air temperature		
Water connection	3/4"		
Design	water cooled, if required air cooled		
Discharging pipe	Stainless steel, length depending on specification		

## Abbildung der Anschlüsse / Pictures of connections / water cooled

### Eis-Tower Naked EB

**2** = Zulauf Kühlwasser  
Cooling Water Inlet

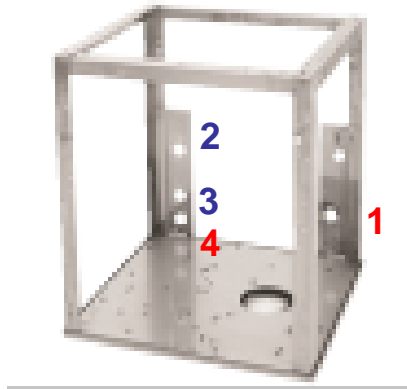


**3** = Ablauf Kühlwasser (Druckleitung) /  
Cooling Water Outlet ( Pressure Pipe)

**1** = Wasserzulauf Eisbereiter  
Water Inlet Ice Maker



**4** = Wasserablauf Eisbereiter  
Water Outlet Ice Maker



## Abbildung der Anschlüsse / Pictures of connections / water cooled

### Eis-Tower Naked EB

**2** = Zulauf Kühlwasser  
Cooling Water Inlet



**3** = Ablauf Kühlwasser (Druckleitung) /

Cooling Water Outlet ( Pressure Pipe)

**1** = Wasserzulauf Eisbereiter  
Water Inlet Ice Maker



**4** = Wasserablauf Eisbereiter

Water Outlet Ice Maker

