



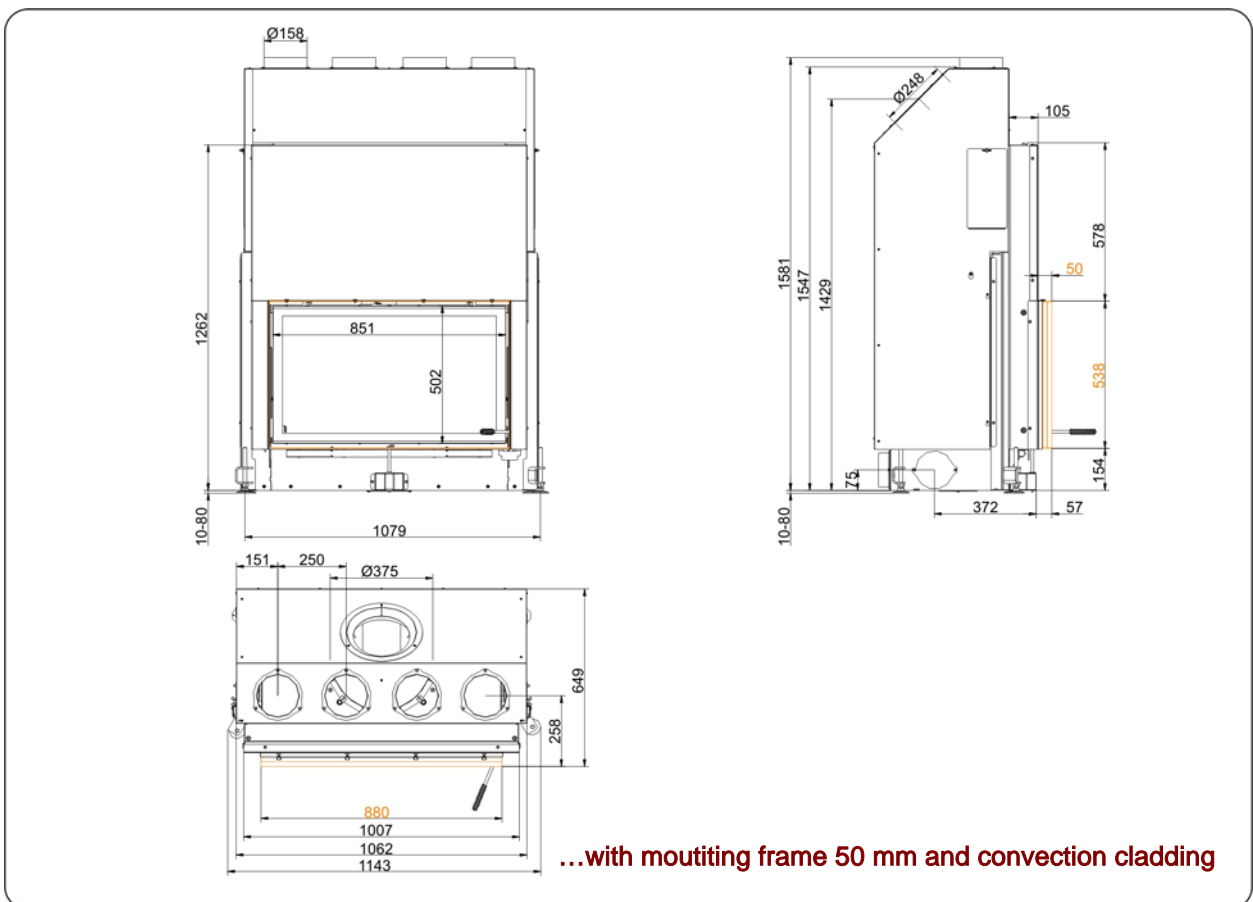
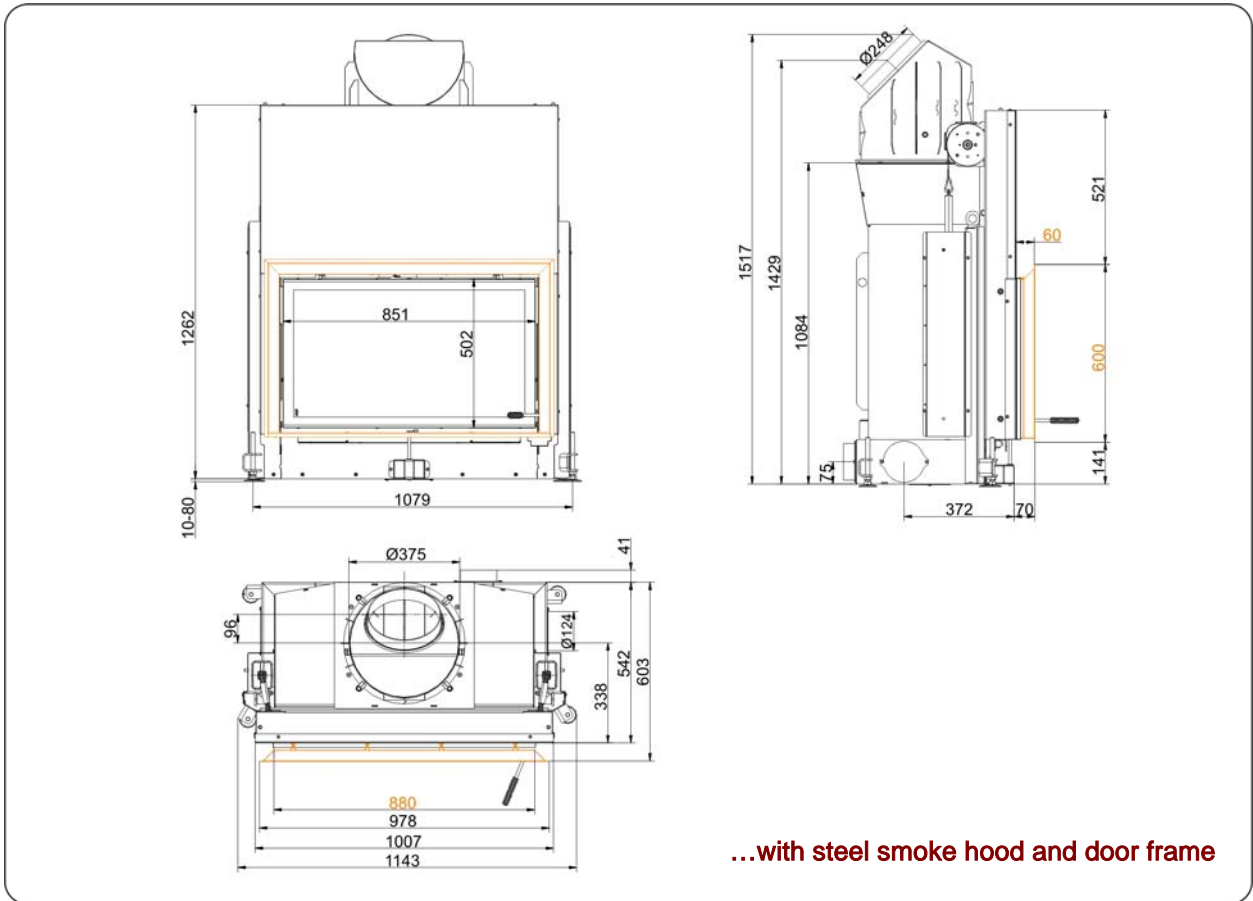
Stil-Kamin 53/88 lifting doors

State: 30.08.2012

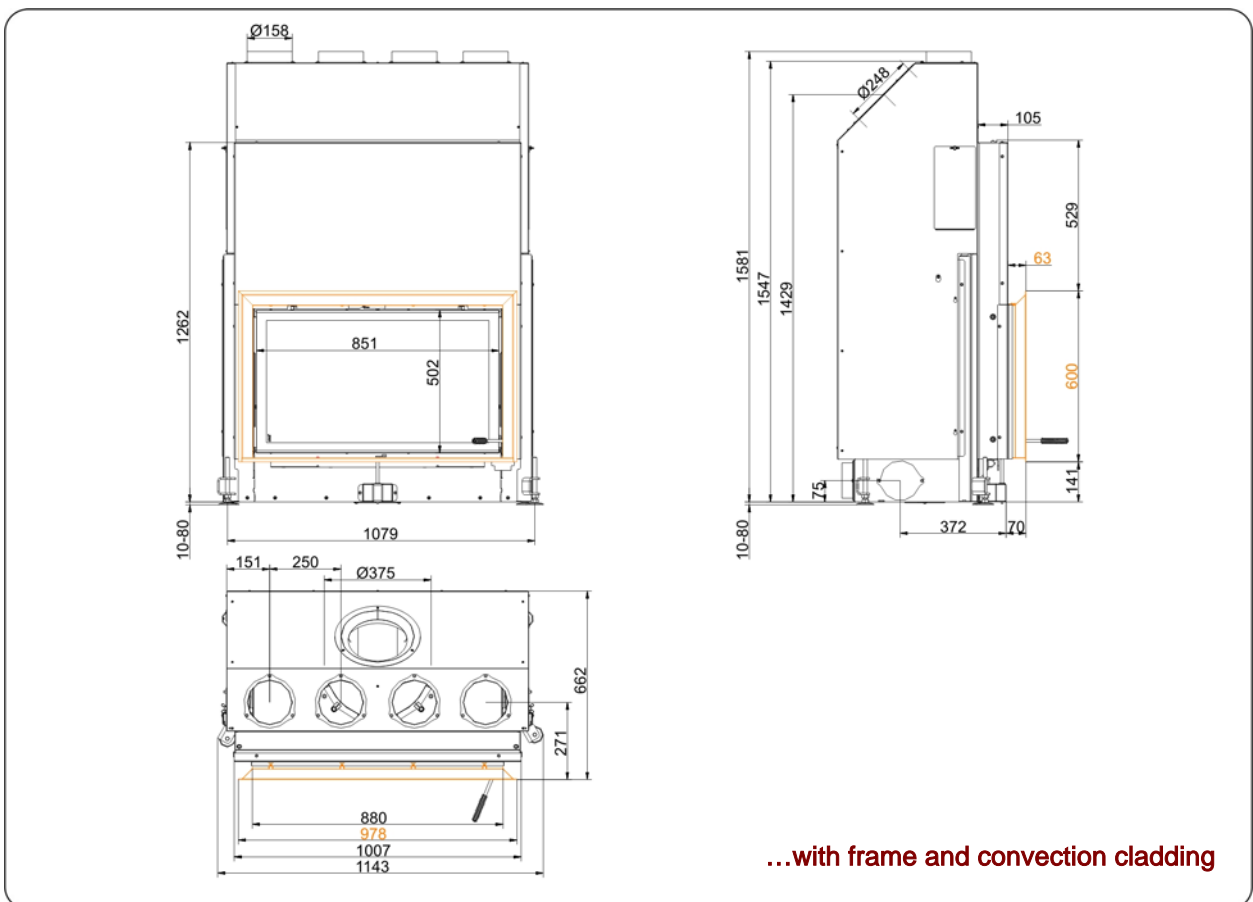
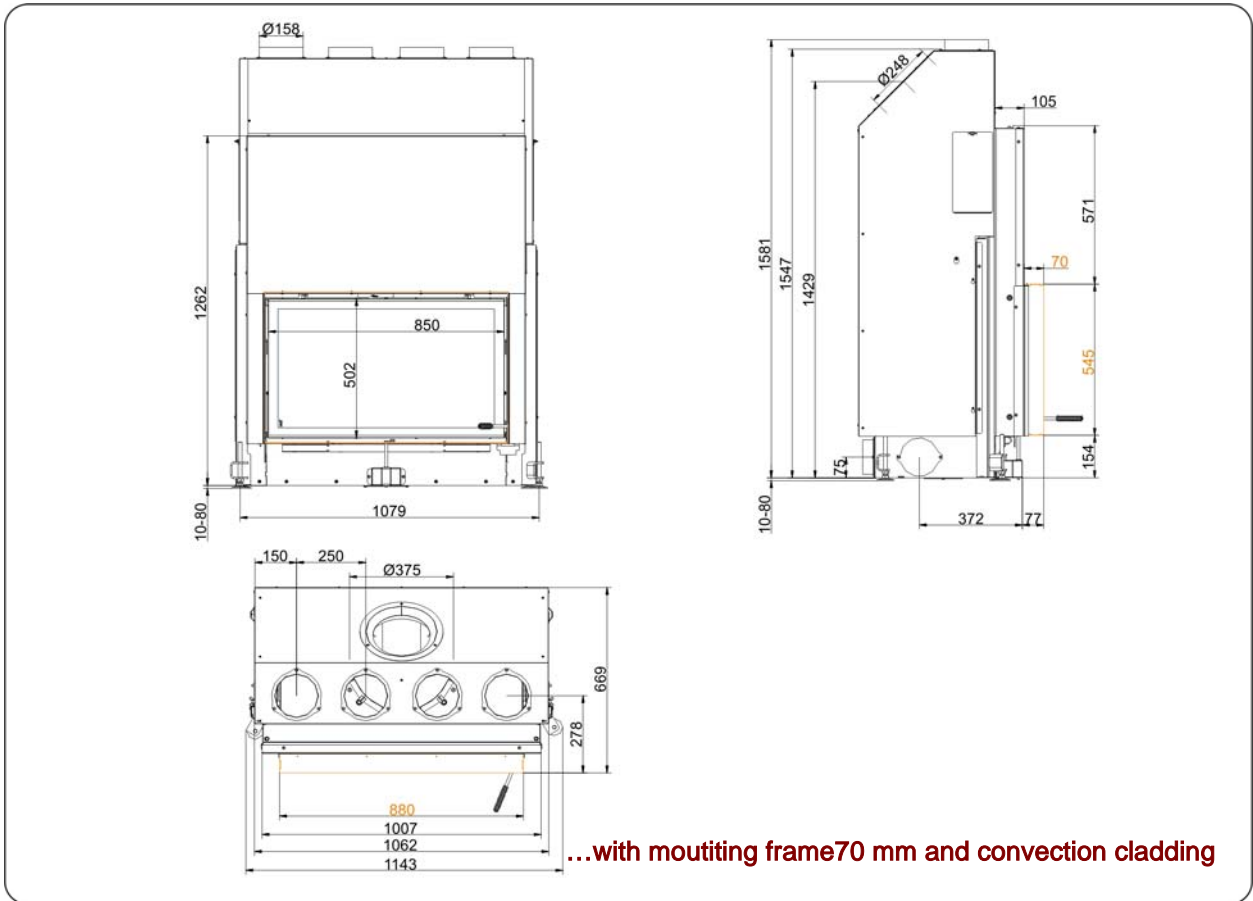


BRUNNER[®]
made in germany

Dimension sheet | **Stil-Kamin 53/88 lifting doors**



Dimension sheet | **Stil-Kamin 53/88 lifting doors**



We suggest for CAD planing Palette CAD. Permanent updated drawings: www.brunner.de
 Frames / front versions are marked colored.

Planning and installation

Stil-Kamin 53/88

| Tested according to | EN 13229 W | EN 13229 W |
|---|---|--------------|
| Values measured at | nominal load | open door |
| Suitable for all construction types according to rules | OK | OK |
| Data for functional demonstration | | |
| Rated heat power | kW 11 | - |
| Firewood consumption | kg/h 3,5 | 3,5 |
| Combustion performance | kW 13 | 13 |
| Flue gas mass flow | g/s 13 | 70 |
| Outlet temperature (before heating surface) | °C 325 | - |
| Flue gas temperature after | | |
| attached steel smoke hood | °C 190 | 120 |
| 1 x adjoining cast iron radiator (GNF10) | °C 135 | - |
| 6 x accumulation rings (MAS) ¹⁾ | °C 205 | - |
| adjoining ceramic accumulator ²⁾ | °C - | - |
| ceramic modular accumulator (KMS system) | °C - | - |
| water boiler | °C - | - |
| Necessary supply pressure | Pa 13 | 6 |
| Combustion air consumption | m ³ /h 38 | 180 |
| Combustion air connection Ø | mm 125 | - |
| Heat distribution | | |
| Insert / heating surface | % 60 / - | - / - |
| Glass (single / double) | % 40 / - | - / - |
| Boiler | % - | - |
| Cross-section of gratings for max. warm air power | | |
| Supply air | cm ² 1500 | 0 |
| Warm air | cm ² 1500 | 0 |
| Minimal oven surface for closed construction type | | |
| Surface giving off heat | m ² 4,5 | - |
| Space inside oven chamber without / with convection cladding | | |
| Distance to oven chamber wall | cm 8 / 0 | 8 / 0 |
| Distance to floor | cm - | - |
| Heat insulation without / with ³⁾ air gratings / with convection cladding | | |
| Wall | cm 18 / 14 / 3 | 18 / 14 / 3 |
| Floor | cm 4 / 2 / 2 | 4 / 2 / 2 |
| Ceiling | cm 22 / 16 / 16 | 22 / 16 / 16 |
| Insulation of additional fire door DHT | cm - | - |
| Brick lining of protected walls | cm 10 | 10 |
| Weight | | |
| Fireplace + burning chamber | kg | 215 + 120 |
| meets requirement limit values for | | |
| Germany / Austria / Switzerland / Norway | 1.BlmSchV (Stufe 2) / 15a BVG / LRV / - | |

1) Throttle flap recommended

2) Approximate value, must be calculated eventually

3) Values with air gratings, stove casing is heat conducting

Ulrich Brunner GmbH
 Zellhuber Ring 17 -18
 D-84307 Eggenfelden
 Phone: +49 / (0)87 21 / 7 71-0
 Fax: +49 / (0)87 21 / 7 71-100
 info@brunner.de | www.brunner.de



BRUNNER products are offered and sold only by qualified dealers and service centres.
 Subject to technical and assortment changes. Errors excepted. (08/12)